

## Medium Voltage In-Line Cold-Applied Splice



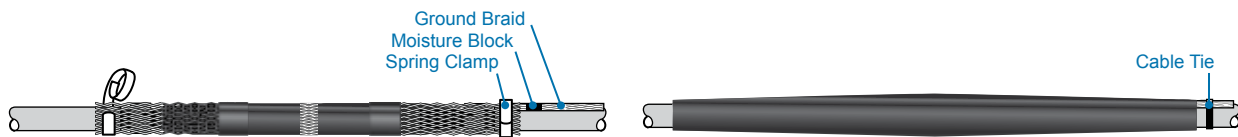
### CSJA

#### In-line Cold Shrinkable Joints for 1/C Shielded Power Cables (15-35 kV)

Tyco Electronics' "All-in-One" CSJA is a cold shrinkable joint for 15 kV through 35 kV. It is designed to splice tape shield, wire shield, LC shield, UniShield, and flat strap shielded cables.

- Cable joint has a pre-expanded EPDM re-jacketing sleeve and an integrated neutral sock.
- The "All-in-One" design is easy to install with minimal steps and short installation time.
- A pre-expanded, single-piece silicone rubber joint body with high mechanical expansion capability allows a wide application range.
- An ergonomically designed spiral holdout provides a smooth installation with low release forces.
- Total length of the splice body on the holdout ranges from 14 to 19 inches providing a compact design.
- The Silicone rubber body provides high dielectric strength, high tear strength, low tension set, and excellent low temperature recovery.
- Integrated electrical stress control enhanced by factory molded stress cones and Faraday cage.
- Void filling stress relief mastics are not necessary.
- Proven shield continuity concept.
- The joint accepts both mechanical and compression connectors.
- Meets IEEE-404 requirements for 15 kV through 35 kV.

Each silicone splice body is factory tested to include AC withstand and partial discharge in accordance with IEEE-404 production tests.



#### Selection Information: dimensions in inches

Use CSJ-EG kits to externally ground a cold shrinkable splice.

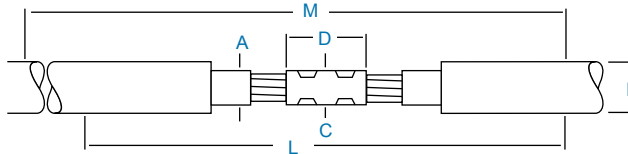
| Catalog Number                             | Length of Moisture Blocked Braid | Braid (AWG) |
|--|----------------------------------|-------------|
| <b>Cold-applied External Grounding Kit</b> |                                  |             |
| CSJ-EG-1                                   | 24 (610)                         | #8          |
| CSJ-EG-2                                   | 24 (610)                         | #6          |
| CSJ-EG-3                                   | 24 (610)                         | #4          |

#### Ordering Information

1. Selections are based on the typical dimensions of 100% insulated cables, manufactured in accordance with AEIC standard. Nominal insulation thickness (100%): 15 kV: 175mils, 25 kV:260mils, 35 kV:345mils.
2. Select the appropriate catalog number. Use the insulation OD, and jacket OD range as the final ordering criteria.
3. For mechanical ShearBolt connector included in the kit confirm the correct connector selection according to the Min/Max diameter over the cable conductor from the tables.
4. If external grounding is required, order the CSJ-EG kit.
5. For other applications or if you have any questions, contact your Tyco Electronics representative.
6. Standard package: 1 kit/box
7. Related test report: [EDR-5430](#), [EDR-5455](#)
8. For AI Mechanical ShearBolt connector information request datasheet 9-1773440-4 and for CU request 165972.

# Medium Voltage In-Line Cold-Applied Splice

Selection Information: dimensions in inches (millimeters)



| Catalog Number                      | Voltage Class | Nominal Cable Range | Insulation O.D. (Min.-Max.) |             | Jacket O.D. (Max.) | Neutral Sock (AWG) | Maximum Connector Dimensions |          | Kit Installed Length | Required Installation Space |
|-------------------------------------|---------------|---------------------|-----------------------------|-------------|--------------------|--------------------|------------------------------|----------|----------------------|-----------------------------|
|                                     |               |                     | A                           | B           |                    |                    | C                            | D        |                      |                             |
| <b>CSJA Joint Without Connector</b> |               |                     |                             |             |                    |                    |                              |          |                      |                             |
| CSJA-1521                           | 15 kV         | #2-350              | 0.69-1.20 (17.5-30.5)       | 1.50 (38.1) | 1/0                | 1.30 (33.0)        | 5.50 (140.0)                 | 29 (737) | 39 (990)             |                             |
| CSJA-1522                           | 15 kV         | 4/0-750             | 0.87-1.40 (22.1-35.6)       | 1.80 (46.0) | 1/0                | 1.50 (38.0)        | 5.50 (140.0)                 | 29 (737) | 39 (990)             |                             |
| CSJA-1523                           | 15 kV         | 350-1000            | 1.03-1.58 (26.2-40.0)       | 2.05 (52.1) | 2/0                | 1.65 (42.0)        | 6.69 (170.0)                 | 33 (838) | 43 (1090)            |                             |
| CSJA-1524                           | 15 kV         | 750-1250            | 1.28-2.05 (32.50-52.0)      | 2.60 (66.0) | 2/0                | 1.85 (47.0)        | 7.90 (200.0)                 | 37 (939) | 49 (1244)            |                             |
| CSJA-2822                           | 28 kV         | #1-500              | 0.87-1.40 (22.1-35.6)       | 1.80 (46.0) | 1/0                | 1.50 (38.0)        | 5.50 (140.0)                 | 29 (737) | 39 (990)             |                             |
| CSJA-2823                           | 28 kV         | 4/0-750             | 1.03-1.58 (26.20-40.0)      | 2.05 (52.1) | 2/0                | 1.65 (42.0)        | 6.69 (170.0)                 | 33 (838) | 43 (1090)            |                             |
| CSJA-2824                           | 28 kV         | 500-1250            | 1.28-2.05 (32.50-52.0)      | 2.60 (66.0) | 2/0                | 1.85 (47.0)        | 7.90 (200.0)                 | 37 (939) | 49 (1244)            |                             |
| CSJA-3523                           | 35 kV         | 1/0-350             | 1.03-1.49 (26.20-37.8)      | 2.05 (52.1) | 2/0                | 1.40 (35.6)        | 5.50 (140.0)                 | 33 (838) | 43 (1090)            |                             |
| CSJA-3524                           | 35 kV         | 350-1000            | 1.36-2.05 (34.54-52.0)      | 2.60 (66.0) | 2/0                | 1.96 (50.0)        | 7.90 (200.0)                 | 37 (939) | 49 (1244)            |                             |
| CSJA-3525                           | 35 kV         | 750-1250            | 1.63-2.36 (41.40-60.0)      | 2.60 (66.0) | 2/0                | 2.36 (60.0)        | 7.90 (200.0)                 | 37 (939) | 49 (1244)            |                             |

| Catalog Number  | Voltage Class | Nominal Cable Range | Insulation O.D. (Min.-Max.) |             | Jacket O.D. (Max.) | Neutral Sock (AWG)      | Min/Max Diameter Over Cable Conductor* | Kit Installed Length | Required Installation Space |
|---|---------------|---------------------|-----------------------------|-------------|--------------------|-------------------------|--|----------------------|-----------------------------|
|   |               |                     | A                           | B           |                    |                         |  |                      |                             |
| <b>CSJA Joint With Copper Mechanical Shear Bolt Connector</b> |               |                     |                             |             |                    |                         |  |                      |                             |
| CSJA-1521M1   | 15 kV         | 2/0-350             | 0.69-1.20 (17.5-30.5)       | 1.50 (38.1) | 1/0                | 0.376-0.736 (9.50-18.7) | 29 (737)                               | 39 (990)             |                             |
| CSJA-1522M1   | 15 kV         | 4/0-500             | 0.87-1.40 (22.1-35.6)       | 1.80 (46.0) | 1/0                | 0.376-0.736 (9.50-18.7) | 29 (737)                               | 39 (990)             |                             |
| CSJA-1522M2   | 15 kV         | 350-750             | 0.87-1.40 (22.1-35.6)       | 1.80 (46.0) | 1/0                | 0.570-0.945 (14.5-24.0) | 29 (737)                               | 39 (990)             |                             |
| CSJA-1523M2   | 15 kV         | 350-750             | 1.03-1.58 (26.2-40.0)       | 2.05 (52.1) | 2/0                | 0.570-0.945 (14.5-24.0) | 33 (838)                               | 43 (1090)            |                             |
| CSJA-2822M1   | 28 kV         | 2/0-500             | 0.87-1.40 (22.1-35.6)       | 1.80 (46.0) | 1/0                | 0.376-0.736 (9.50-18.7) | 29 (737)                               | 39 (990)             |                             |
| CSJA-2823M2   | 28 kV         | 350-750             | 1.03-1.58 (26.2-40.0)       | 2.05 (52.1) | 2/0                | 0.570-0.945 (14.5-24.0) | 33 (838)                               | 43 (1090)            |                             |
| CSJA-2824M2   | 28 kV         | 500-750             | 1.28-2.05 (32.50-52.0)      | 2.60 (66.0) | 2/0                | 0.570-0.945 (14.5-24.0) | 37 (939)                               | 49 (1244)            |                             |
| CSJA-3523M1   | 35kV          | 2/0-350             | 1.03-1.49 (26.20-37.8)      | 2.05 (52.1) | 2/0                | 0.376-0.736 (9.50-18.7) | 33 (838)                               | 43 (1090)            |                             |
| CSJA-3524M2   | 35kV          | 350-750             | 1.36-2.05 (34.54-52.0)      | 2.60(66.0)  | 2/0                | 0.570-0.945 (14.5-24.0) | 37 (939)                               | 49 (1244)            |                             |

\* Min/max diameter over cable conductor accepted by the copper mechanical connector.

|   |       |           |                        |             |     |                          |          |           |  |
|---|-------|-----------|------------------------|-------------|-----|--------------------------|----------|-----------|--|
| <b>CSJA Joint With Aluminum Mechanical Shear Bolt Connector</b> |       |           |                        |             |     |                          |          |           |  |
| CSJA-1521M4   | 15 kV | #2-3/0    | 0.69-1.20 (17.5-30.5)  | 1.50 (38.1) | 1/0 | 0.268-0.470 (6.80-11.9)  | 29 (737) | 39 (990)  |  |
| CSJA-1521M5   | 15 kV | #2-350    | 0.69-1.20 (17.5-30.5)  | 1.50 (38.1) | 1/0 | 0.268-0.681 (6.80-17.3)  | 29 (737) | 39 (990)  |  |
| CSJA-1522M6   | 15 kV | 4/0-500   | 0.87-1.40 (22.1-35.6)  | 1.80 (46.0) | 1/0 | 0.423-0.813 (10.7-20.6)  | 29 (737) | 39 (990)  |  |
| CSJA-1522M7   | 15 kV | 500-750   | 0.87-1.40 (22.1-35.6)  | 1.80 (46.0) | 1/0 | 0.736-0.998 (18.7-25.3)  | 29 (737) | 39 (990)  |  |
| CSJA-1523M8   | 15 kV | 350-750   | 1.03-1.58 (26.20-40.0) | 2.05 (52.1) | 2/0 | 0.616-0.998 (15.7-25.3)  | 33 (838) | 43 (1090) |  |
| CSJA-1524M9   | 15 kV | 750-1000  | 1.28-2.05 (32.50-52.0) | 2.60 (66.0) | 2/0 | 0.813-1.152 (20.6-29.2)  | 37 (939) | 49 (1244) |  |
| CSJA-2822M5   | 28 kV | #1-350    | 0.87-1.40 (22.1-35.6)  | 1.80 (46.0) | 1/0 | 0.268-0.681 (6.80-17.3)  | 29 (737) | 39 (990)  |  |
| CSJA-2822M6   | 28 kV | 4/0-500   | 0.87-1.40 (22.1-35.6)  | 1.80 (46.0) | 1/0 | 0.423-0.813 (10.7-20.6)  | 29 (737) | 39 (990)  |  |
| CSJA-2823M8   | 28 kV | 350-750   | 1.03-1.58 (26.20-40.0) | 2.05 (52.1) | 2/0 | 0.616-0.998 (15.7-25.3)  | 33 (838) | 43 (1090) |  |
| CSJA-2824M8   | 28 kV | 500-750   | 1.28-2.05 (32.50-52.0) | 2.60 (66.0) | 2/0 | 0.616-0.998 (15.7-25.3)  | 37 (939) | 49 (1244) |  |
| CSJA-2824M9   | 28 kV | 750-1000  | 1.28-2.05 (32.50-52.0) | 2.60 (66.0) | 2/0 | 0.813-1.152 (20.60-29.2) | 37 (939) | 49 (1244) |  |
| CSJA-3523M5   | 35 kV | 1/0-350   | 1.03-1.49 (26.20-37.8) | 2.05 (52.1) | 2/0 | 0.268-0.681 (6.8-17.3)   | 33 (838) | 43 (1090) |  |
| CSJA-3524M8   | 35 kV | 350-750   | 1.36-2.05 (34.54-52.0) | 2.60 (66.0) | 2/0 | 0.616-0.998 (15.7-25.3)  | 37 (939) | 49 (1244) |  |
| CSJA-3524M9   | 35 kV | 750-1000  | 1.36-2.05 (34.54-52.0) | 2.60 (66.0) | 2/0 | 0.813-1.152 (20.60-29.2) | 37 (939) | 49 (1244) |  |
| CSJA-3525M10  | 35 kV | 1000-1250 | 1.63-2.36 (41.40-60.0) | 2.60 (66.0) | 2/0 | 0.060-1.251 (23.0-31.7)  | 37 (939) | 49 (1244) |  |

\* Min./max. diameter over cable conductor accepted by the aluminum mechanical connector.