

Medium Voltage In-Line Heat-Shrink Splice

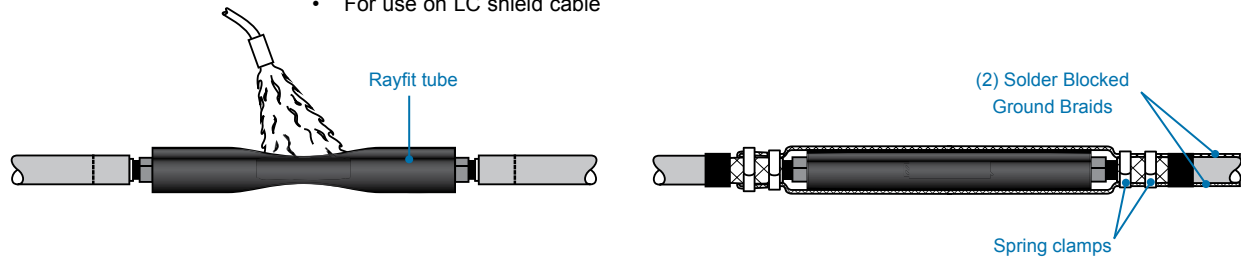


HVS 1/C LC Shielded and Flat Strap Cables (15 kV)

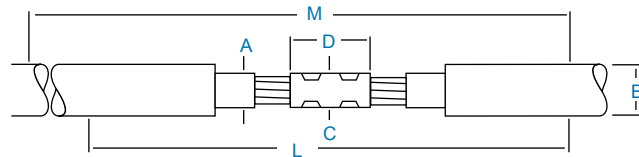
The NEWLY designed Rayfit HVS kits feature a metal laminated wraparound re-jacketing sleeve that reduces moisture-vapor transmission. This tough sleeve also protects the splice from coincidental abrasion, back fill and handling damage.

Ground connections are made using stainless steel clamps and tinned copper braid. The ground connections have been tested to multiple reclosed faults in excess of 13-kA rms without damage.

- Designed to withstand fault current duty of 10-kA rms for 100 cycles
- Rated to IEEE 404
- For use on LC shield cable



Selection Information: dimensions in inches (millimeters)



Catalog Number	Conductor Size (AWG/kcmil)	Insulation	Jacket	Maximum Connector Dimensions		Kit Installed Length L	Required Installation Space M
		Diameter (Min.-Max.)	O.D. (Max.)	O.D. C	Length D		
HVS-C-1530S without Connector							
HVS-C-1531S	#2-2/0	0.65-0.95 (17-24)	1.20 (30)	0.80 (20)	4.0 (100)	28 (700)	28 (700)
HVS-C-1532S	3/0-400	0.85-1.30(23-33)	1.65 (42)	1.20 (30)	5.0 (125)	28 (700)	28 (700)
HVS-C-1533S	500-750	1.10-1.55 (28-47)	1.90 (48)	1.45 (44)	6.0 (150)	35 (870)	35 (870)
HVS-C-1534S	750-1000	1.30-1.90 (33-48)	2.30 (58)	1.85 (47)	8.0 (200)	35 (870)	35 (870)

HVS-C-1530S with Copper Mechanical ShearBolt Connector

HVS-C-1532S-M1	3/0-400	0.85-1.30 (23-33)	1.20 (30)	1.20 (30)	4.0 (100)	28 (700)	28 (700)
HVS-C-1533S-M2	500-750	1.10-1.55 (28-47)	1.45 (47)	1.45 (37)	5.0 (125)	35 (870)	35 (870)

M1 = CSBS-20C-500C-SOS, M2 = CSBS-300C-750C-SOS

HVS-S-1530S with Aluminum Mechanical ShearBolt Connector

HVS-S-1532S-M4	#2-2/0	0.65-0.95 (17-24)	1.20 (30)	0.95 (24)	2.5 (65)	28 (700)	28 (700)
HVS-S-1532S-M5	2/0-350	0.79-1.19 (20-30)	1.65 (42)	1.25 (30)	4.0 (100)	28 (700)	28 (700)
HVS-S-1533S-M6	350-500	1.04-1.33 (26-34)	1.80 (45)	1.30 (34)	5.0 (125)	35 (870)	35 (870)
HVS-S-1534S-M8	500-750	1.16-1.55 (29-39)	1.90 (48)	1.55 (40)	6.0 (150)	35 (870)	35 (870)
HVS-S-1534S-M9	750-1000	1.35-1.70 (34-43)	2.30 (58)	1.75 (43)	8.0 (200)	35 (870)	35 (870)

M4 = ASBS-2-3/0, M5 = ASBS-2-350, M6 = ASBS-3/0-500, M8 = ASBS-500-750, M9 = ASBS-600-1000

Ordering Information

1. Select the appropriate catalog number. All selections are based on the typical dimensions for both 100% and 133% insulated cables, nominal insulation thickness 0.175-0.220 inch.
2. Use the insulation OD, and jacket OD range as the final ordering criteria.
3. Kits can be installed with either aluminum or copper compression connectors (connectors not included with kit).
4. Kits are supplied with solder blocked ground braids.
5. Standard package: 1 kit/box
6. Related Test Report: [EDR-5440](#) and [EDR-5444](#), IEEE 404-2006 and IEEE 48 draft 2006 for 105° C of Splice and Terminations.
7. For AL Mechanical ShearBolt connector information request datasheet 9-1773440-4 and for CU request 165972.