

Medium Voltage In-Line Heat-Shrink Splice

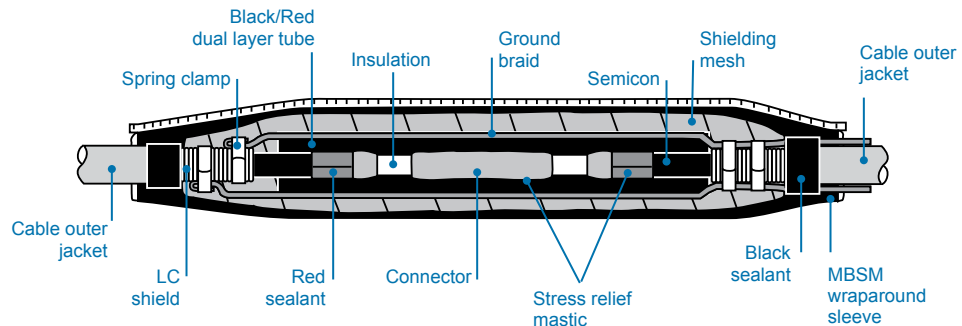
HVS

Splice Kits for 1/C LC and Flat Strap Shield Cable (25-35 kV)

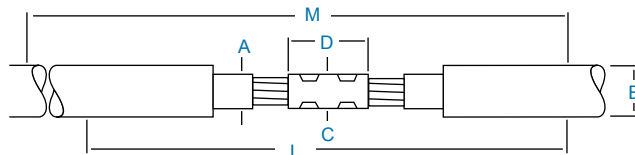
HVS kits feature a metal laminated wraparound re-jacketing sleeve that reduces moisture-vapor transmission. This tough sleeve also protects the splice from coincidental abrasion, back fill, and handling damage.

Ground connections are made using stainless steel clamps and tinned copper braid. The ground connections have been tested to multiple reclosed faults in excess of 13-kA rms without damage.

- Designed to withstand fault current duty of 10-kA rms for 10 cycles
- Rated to IEEE 404



Selection Information: dimensions in inches (millimeters)



Catalog Number	Conductor Size (AWG/kcmil)	Insulation Diameter (Min.-Max.)	Jacket O.D. (Max.)	Maximum Connector Dimensions		Kit Installed Length	Required Installation Space
		A	B	C	D		
HVS-2530S (25 kV)							
HVS-2531S	#1-250	0.90-1.20 (16-24)	1.55 (39)	1.10 (28)	4.0 (102)	36 (914)	48 (1219)
HVS-2532S	350-500	1.20-1.50 (30-38)	1.95 (50)	1.35 (34)	6.0 (152)	37 (940)	50 (1270)
HVS-2533S	750-1000	1.50-1.80 (38-46)	2.40 (61)	1.85 (47)	8.0 (203)	39 (991)	54 (1372)
HVS-3530S (35 kV)							
HVS-3531S	1/0-3/0	0.95-1.35 (29-34)	1.55 (39)	1.00 (25)	4.0 (102)	40 (1016)	52 (1321)
HVS-3532S	4/0-500	1.30-1.70 (33-43)	2.10 (53)	1.60 (41)	5.5 (140)	40 (1016)	58 (1473)
HVS-3533S	750-1000	1.65-2.15 (42-55)	2.80 (71)	1.85 (47)	8.0 (203)	48 (1219)	64 (1626)

Ordering Information

1. Select the appropriate catalog number. All selections are based on the typical dimensions of 100% and 133% insulated cables, manufactured in accordance with AIEC standard and commonly used connectors. Nominal insulation thickness (100%): 15 kV: 175 mils. 25 kV: 260 mils. 35 kV: 345 mils. Nominal insulation thickness (133%): 15 kV: 220 mils.
2. For cables manufactured to other specifications, confirm selection with cable and connector dimensions.
3. Kits do not contain connectors; order compression or solder connectors separately.
4. HVS kits are supplied with two pieces of braid to provide fault current carrying capacity over the splice. User should verify compatibility of supplied braids to application on LC shield cable.
5. Standard package: 1 kit/box
6. Related test reports:
25 kV: [EDR-5150](#)
35 kV: [EDR-5157](#)