

## Medium Voltage In-Line Heat-Shrink Splice



### HVSY

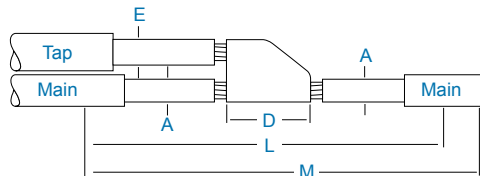
#### Wye (Tap) Splices for 1/C Poly-Poly, PILC-PILC, and PILC-Poly Cable (15 kV)

The Wye (Tap) splice kits may be used for submersible or direct burial applications and have been tested to meet the performance requirements of IEEE-404. They include a positive heat-activated sealant system that eliminates taping between main and tap cables.

- Designed to seal against moisture ingress by including a branch clip and the heavy-duty MBSM wraparound sleeve
- Internal moisture seals provide a redundant seal against water intrusion
- Splices accept a wide range of main and tap cable sizes
- Compact shape simplifies cable training
- Rated to IEEE 404

HVSY-1520S is for use on copper tape, wire shield, lead sheath, and UniShield cables. HVSY-1580D is for use as a wye splice where the main and/or tap cables may be paper-insulated, lead-covered (PILC) cable; varnished cambric-insulated, lead-covered (VCLC) cable.

#### Selection Information: dimensions in inches (millimeters)



Catalog Number	Poly Conductor Size (AWG/kcmil)		Insulation Diameter (Min.-Max.)		Connector Length (Max.)	Kit Installed Length	Required Installation Space	Burdny Connector
	Main	Tap	A	E				

For Use with Soldered Connectors:

#### HVSY-1520S (15 kV Polymeric Wye)

HVSY-1522S	#2-4/0	#2-4/0	0.65-1.05 (17-27)	0.65-1.05 (17-27)	3.0 (75)	30 (750)	45 (1125)	
HVSY-1523S	250-750	#2-750	0.95-1.45 (24-37)	0.65-1.45 (17-37)	3.5 (90)	30 (750)	45 (1125)	

For use with Burdny YSH Crimp Connectors for Copper Conductors Only:

#### HVSY-1520S (15 kV Polymeric Wye)

HVSY-1522S	#2-4/0	#2-4/0	0.65-1.05 (17-27)	0.65-1.05 (17-27)	3.0 (75)	30 (750)	45 (1125)	YSH-2929
HVSY-1523S	250-500	4/0-500	0.85-1.25 (22-32)	0.85-1.25 (22-32)	3.5 (90)	30 (750)	45 (1125)	YSH-3434
HVSY-1523S	500-750	350-750	1.10-1.45 (28-37)	1.00-1.45 (25-37)	3.5 (90)	30 (750)	45 (1125)	YSH-3939

Catalog Number	PILC/poly Conductor Size (AWG/kcmil)		PILC/Poly Insulation Diameter (Min.-Max.)		Lead Sheath (O.D. Max.)	Connector Length (Max.)	Kit Installed Length	Required Installation Space
	Main	Tap	A	E				

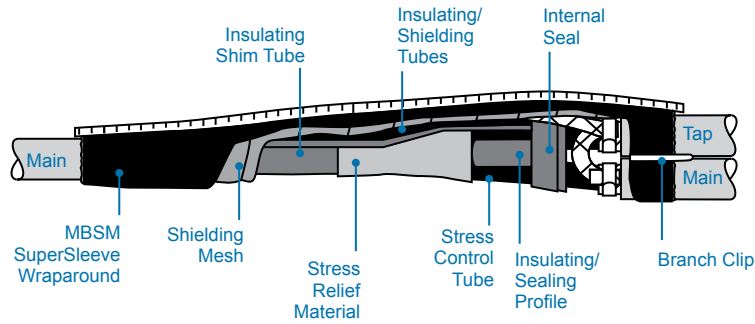
#### HVSY-1580D (15 kV PILC and PILC-Poly Wye)

HVSY-1582D	#2-4/0	#2-4/0	0.65-1.05 (17-27)	0.65-1.05 (17-27)	1.20 (30)	3.0 (75)	30 (750)	45 (1125)
HVSY-1583D	250-750	#2-750	0.95-1.45 (24-37)	0.65-1.45 (17-37)	1.50 (38)	3.5 (90)	30 (750)	45 (1125)

Ordering Information continues next page

## Medium Voltage In-Line Heat-Shrink Splice

*HVSY continues*



### Ordering Information

1. Select the appropriate catalog number. All selections are based on the typical dimensions of 100% and 133% insulated cables and dimensions of commonly used connectors manufactured in accordance with AEIC standard. Nominal insulation thickness (100%): 165 mils (PILC/VCLC) 175 mils (poly) Nominal insulation thickness (133%): 220 mils (poly).
2. For cables manufactured to other specifications, confirm selection with cable and connector dimensions.
3. Kits do not contain connectors. For connector information contact your local Tyco Electronics sales representative for information. For HVSY-1520S kits with copper conductors only, H-tap compressed connectors, available from Burndy (800-346-4175), may be used in place of the half-duplex connector.
4. Check poly cable insulation diameter to help ensure a proper fit.
5. For 15 kV H-configuration connections on 1/C shielded power cable, order the HVSH-1520 mod kit for use in conjunction with appropriate HVSY-1520S kit.
6. Standard package: 1 kit/box
7. Related test reports:  
 HVSY-1520S: [EDR-5236](#), [EDR-5256](#),  
 HVSY-1580D: [EDR-5235](#).