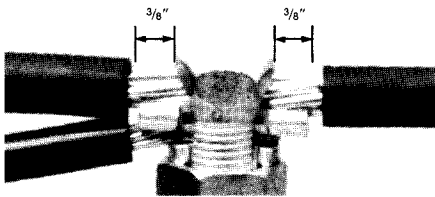


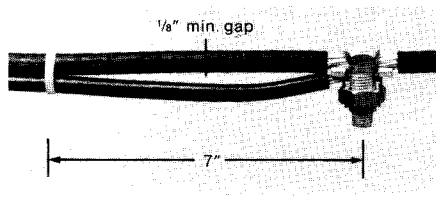
<b>General information</b>	<b>ASE</b> (length 7¾ inches)
<b>Compression connectors:</b>	Die index, C, D, O; Wire range, Main 6-4/0 AWG, Tap 14-4/0 AWG. Max. connector length 3.25 inches.
<b>Standard split bolt:</b>	Wire range, Main 6-2 AWG, Tap 14-2 AWG. Max. connector length 1.5 inches.
<b>Materials in kit</b>	1 Heat-shrinkable wrap-sleeve 1 Insulation strip or black insulation tape 2 Tie wrap 1 Closure channel

**Installation instructions**

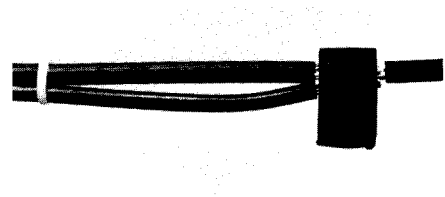
**A. Prepare cable**



1. Install connector. **Note** maximum length of stripped wire leads. Wipe off excess contact compound.

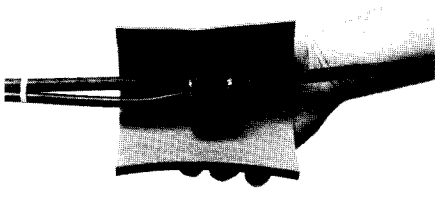


2. Position tie wrap(s) as shown. Two are required for "H" connections. **Note** 1/8 inch gap produced for adhesive encapsulation.

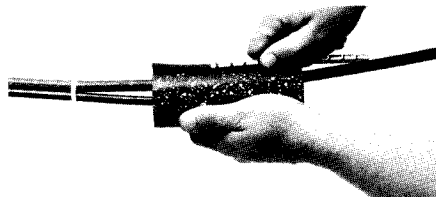


3. Wrap insulation strip or tape centered on connection. If required, heat strip end slightly to tack in place.

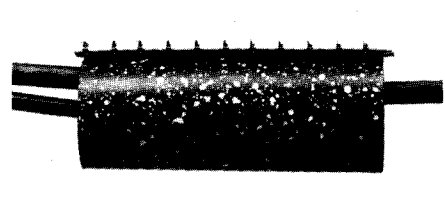
**B. Position sleeve**



1. Position sleeve closure over main cable run.

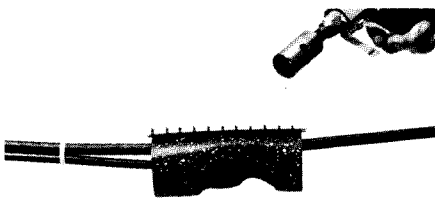


2. Slide channel onto sleeve rails.

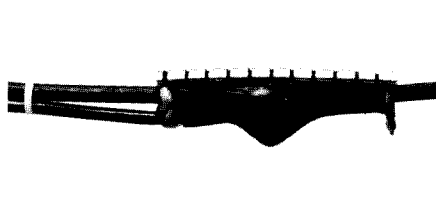


3. Channel ends should extend evenly beyond ends of sleeve.

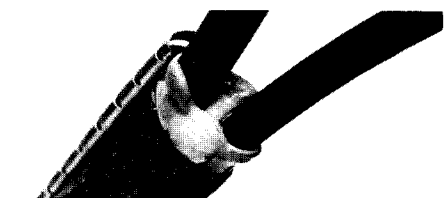
**C. Heat-shrink assembly**



1. Using yellow tip of torch\* flame, apply heat in a uniform back and forth motion, giving special emphasis to rail/channel area.



2. Apply heat until all indicator paint changes color. Adhesive will extrude from sleeve ends.



3. A few minutes cooling may be required for complete encapsulation to occur between cables.

All products sold in multiples of standard packaging.  
\*Note: Raychem FH 2616A1 torch is recommended.

The information given herein, including drawings, illustrations and schematics which are intended for illustration purposes only, is believed to be reliable. However, Raychem makes no warranties as to its accuracy or completeness and disclaims any liability in connection with its use. Raychem's obligations shall be only as set forth in Raychem's Standard Terms and Conditions of Sale for this product and in no case will Raychem be liable for any incidental, indirect or consequential damages arising out of the sale, resale, use or misuse of the product. Users of Raychem products should make their own evaluation to determine the suitability of each such product for the specific application.

**Joint Specialists Inc.**

410 S. Trade Center Pkwy., Suite A-1  
Conroe, Texas 77385  
936/321-3333