

Repair & Rejacketing



MRS Repair Sleeve Heat-Shrink Wraparound Flame-Retardant Sleeve (2 kV)

Tyco Electronics' wraparound mining repair sleeve provides an efficient method of repairing insulation on flexible cables to 2 kV and repairing jacket damage on high-voltage cable where a splice is not required.

The specially formulated, flame-retardant, flexible wraparound sleeve installs with a low profile quickly and easily, which means the cable can be returned to service in minutes.

The sleeve is ideal for use on trailing cable as well as flexible-construction cables and conduits.

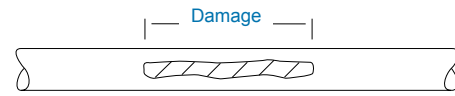
MSHA approved (P-07-KA090012-MSHA).

Selection Information: dimensions in inches (millimeters)

Catalog Number	Cable use Range (Min. – Max.)	Sleeve Length	Std. Pack (Kits/Box)
MRS-12-10	1.00-1.60 (25-41)	10 (254)	20
MRS-12-24	1.00-1.60 (25-41)	24 (610)	10
MRS-34-24	1.60-2.30 (41-58)	24 (610)	10
MRS-34-30	1.60-2.30 (41-58)	30 (762)	10
MRS-56-30	2.30-3.50 (58-89)	30 (762)	10

Kits do not contain connectors.

Damage	Total Seal Length
<3 (<76)	3 (76)
3-12 (76-305)	4 (102)
12-24 (305-610)	6 (152)
>24 (>610)	8 (203)



$$\text{Cut Sleeve Length} = \text{Damage Length} + \text{Total Seal Length}$$

Ordering Information

1. Select the appropriate catalog number based on cable diameter.
2. Kits do not contain connectors.
3. MRS repair sleeve is precoated with adhesive.
4. Kits contain a wraparound sleeve and stainless steel channel closure (removed after installation). Both can be field-cut for shorter requirements.
5. Related test report: [EDR-5028](#).

For connector information refer to the [Connectors & Terminals](#) section of this catalog.

